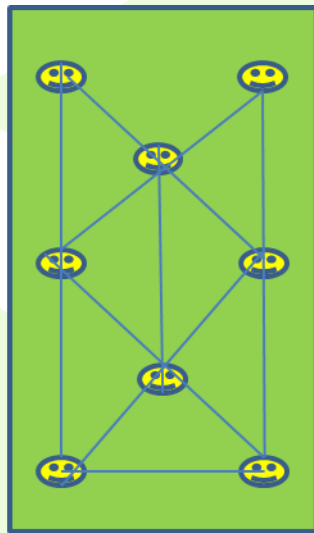


'Sensing' of crop stress and early detection of crop and storage pests and disease

Dr Andy Evans
Crop & Soil Systems
SRUC

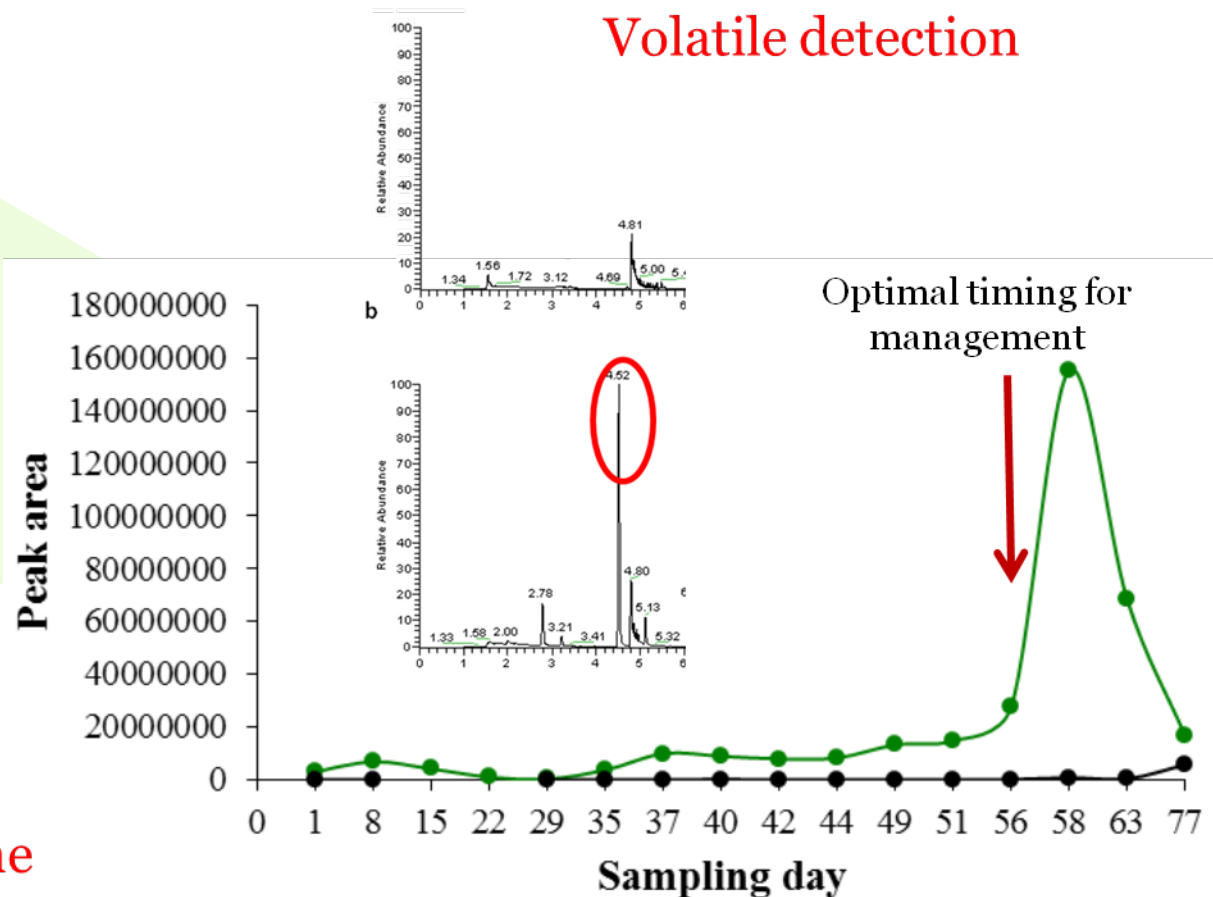
andy.evans@sruc.ac.uk

0131 5354093

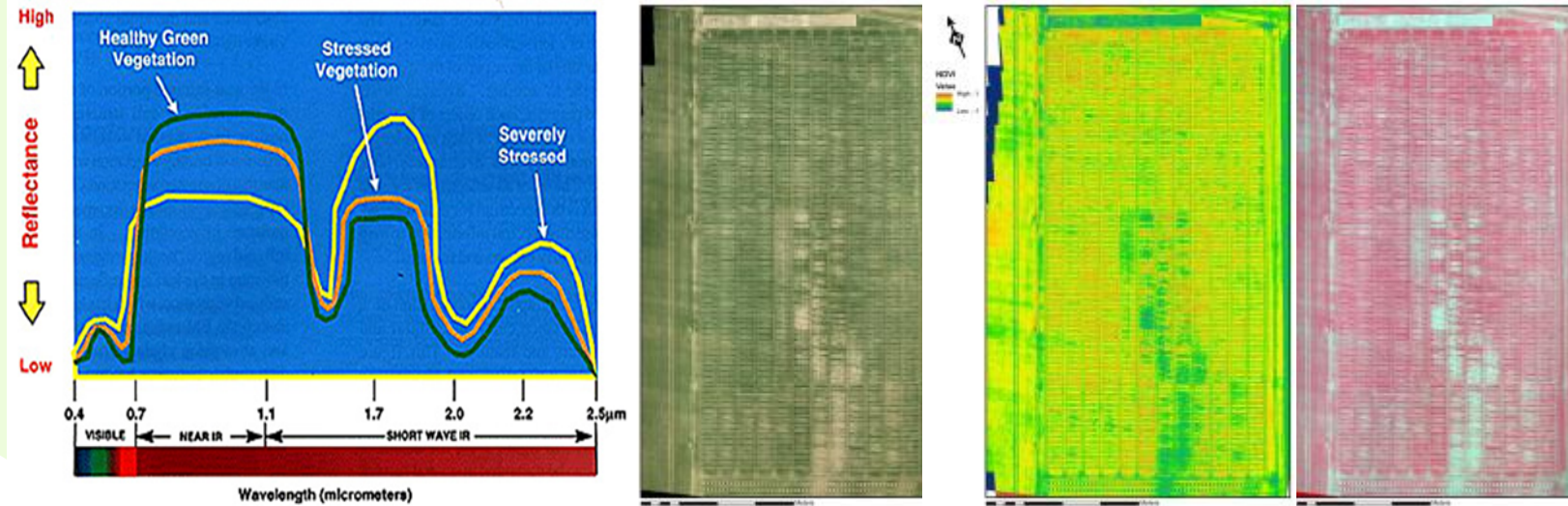


Sentinel 'sensors' in the crop signalling crop stress or pest presence

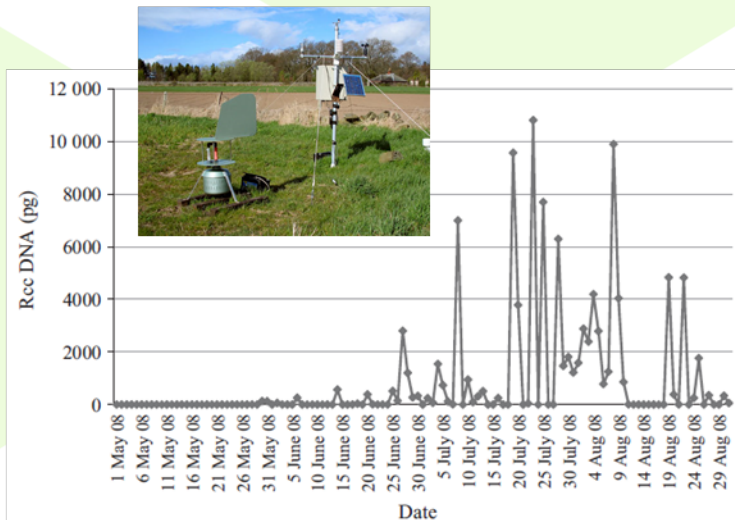
Volatile detection



Multispectral imaging of crop stress, pests and disease



Disease detection by real-time aerial spore sampling and identification



SRUC seek technology solutions to address these challenges!

Dr Andy Evans
Crop & Soil Systems
SRUC

andy.evans@sruc.ac.uk