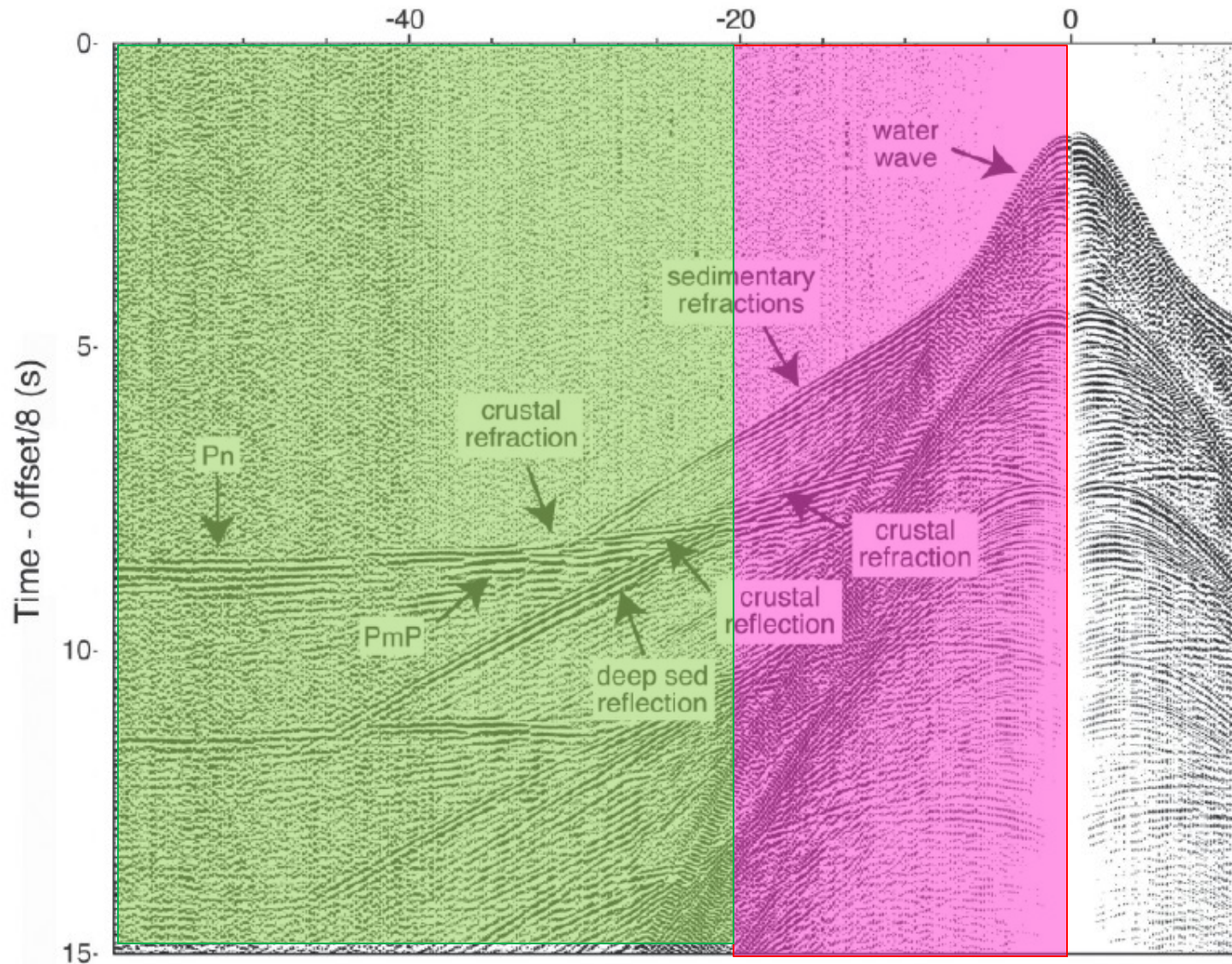


## Sub-Salt(Basalt) Imaging Problem

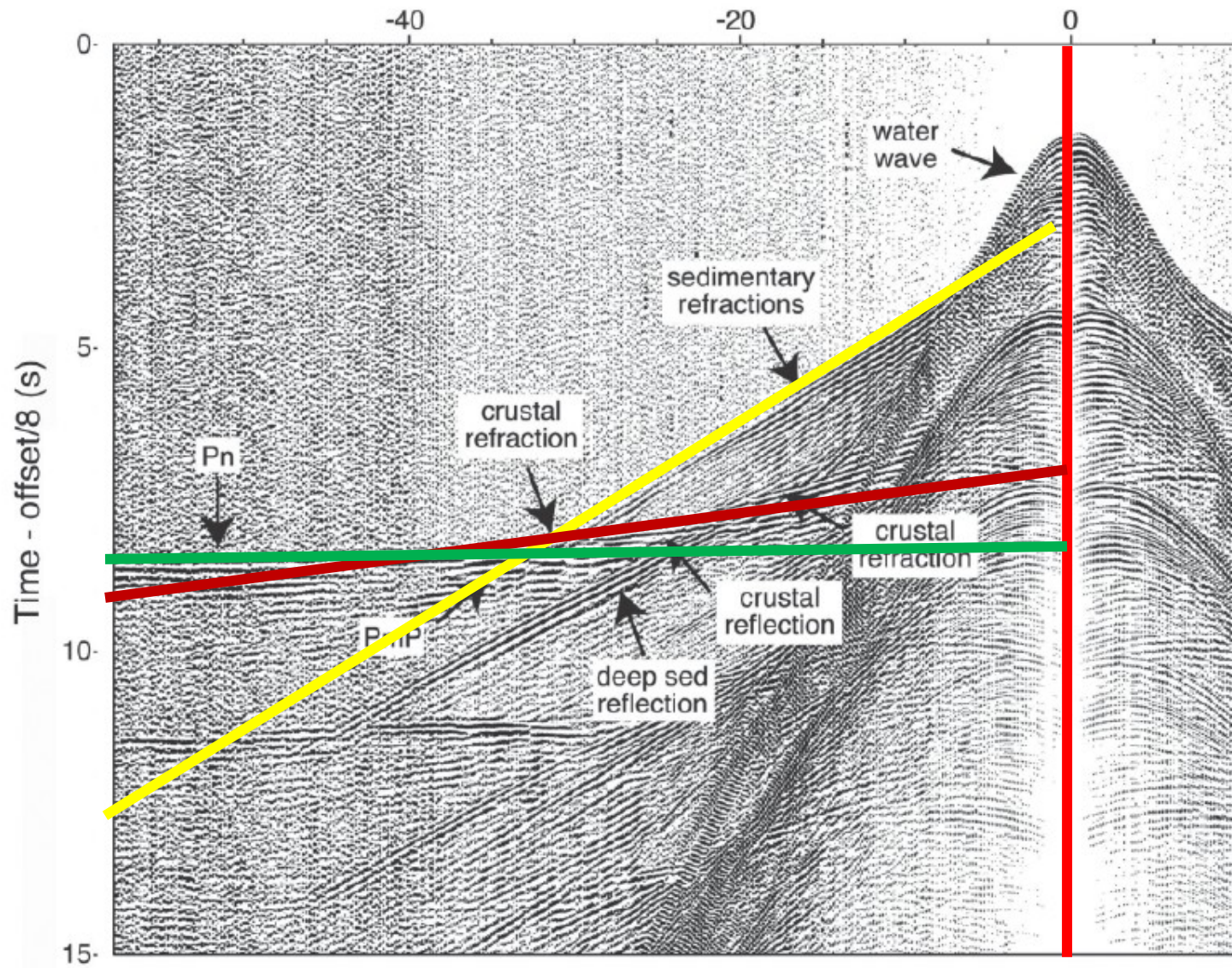
Innovative seismic refraction experiments combined with deep reflection profiles shot with low frequency sources. Constrain sub-salt syn-rift deposit thickness and geometry, crustal thickness variation

Professor Nicky White  
Bullard Laboratories  
Department of Earth Sciences  
University of Cambridge  
njw10@cam.ac.uk

# Wide-angle Refraction Experiments







# Velocity Models

