

EFIB 2014

Narinder Bains

www.seretechinnovation.com

1. Background

- Process Science & Engineering solutions
- Established in 2008 and are based in Sutton Coldfield, UK
- Specialised in sustainable high value manufacturing within the agri-food, food processing, industrial biotechnology and biofuels
- Work closely with academia, science and engineering, fabricators and EPC contractors that have been designing and building plants since the early 1970's and offer considerable track record in process plant delivery.

2. What we do

Our solutions and services include: -

R&D

Design

Build and commissioning of specialised processing pilot plants, prototype plant

Scale up equipment.

Our technical services include: -

Technical assessments

Design and safety studies

Scoping and feasibility studies

Project management

3. Areas of activity

- Sustainable high value chemicals production
- Food processing manufacturing efficiency
- Nutritional Foods and Supplements
- Microbial stability
- Protein recovery
- Separation, Extraction and Solubilization
- Biofuels and Bioenergy

6. Partnerships sought

- Biomass Feedstock Suppliers
- Biochemical processing and engineering companies
- Biorefining organisations
- Sustainable chemicals, composites, polymers and food ingredients end-users
- Food and Drink companies
- Biofuels and Bioenergy companies
- Food and Ingredient laboratories
- Universities

Science and Engineering



Figure 1: Processing



Figure 2: Pilot plant/Prototypes

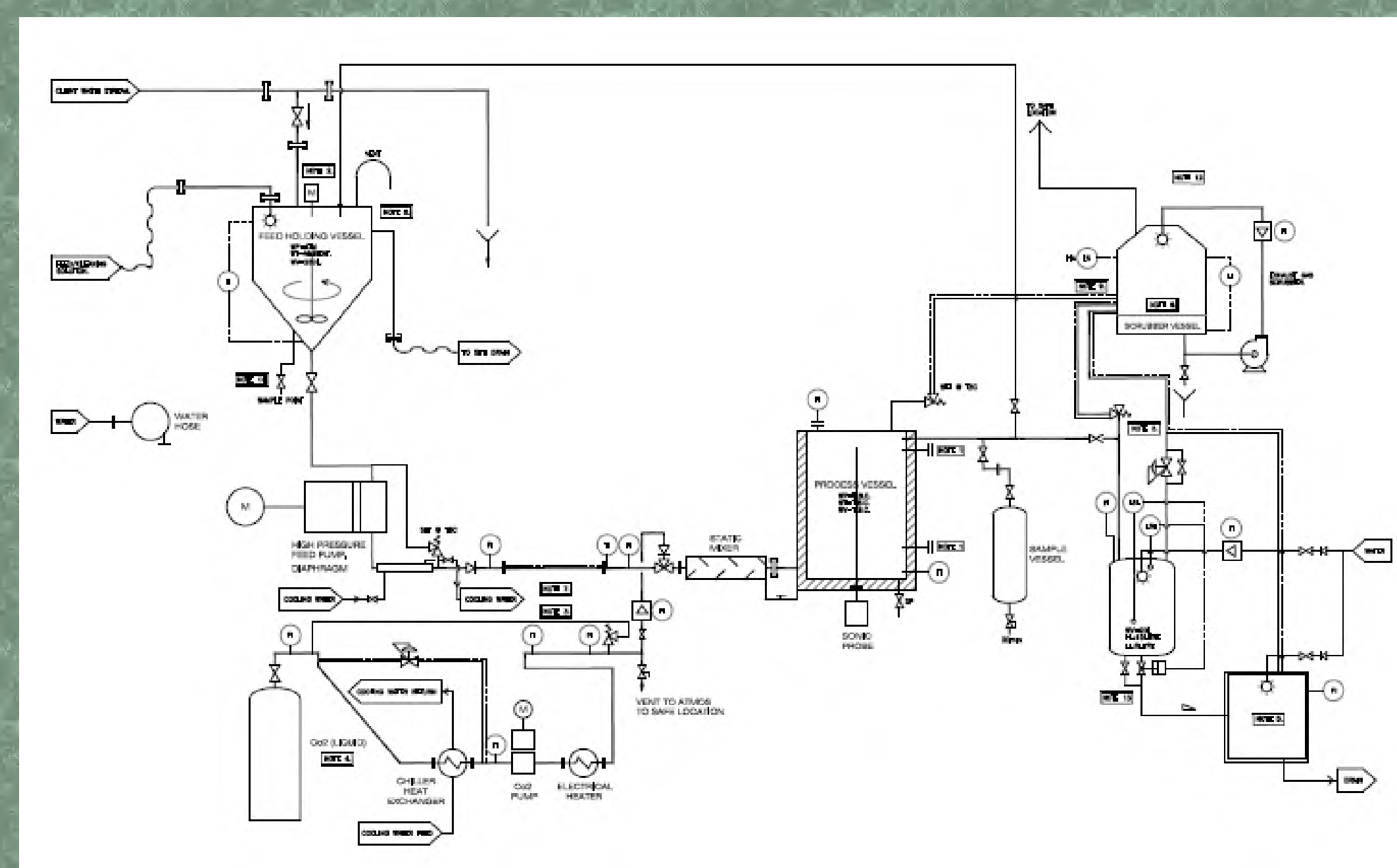


Figure 3: Design Studies

Funding Success

- EU FP7
- UK Technology Strategy Board
- EU Regional Development Fund