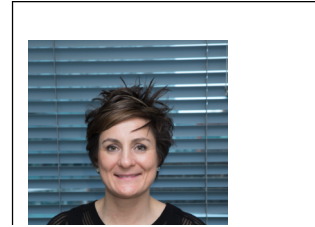




# EDF Energy R&D UK Centre



## Organisational Profile

EDF Energy is one of Britain’s biggest energy providers, supplying gas and electricity to just fewer than 6 million customers and 235,000 companies, including 11,000 major energy users. It is also the only major UK Energy Company with an in-house R&D Centre. The EDF Energy R&D UK Centre has over 40+ experts producing innovative solutions in three key research areas: 1) Low Carbon Generation, 2) Smart Energy Supply, and 3) Energy Markets and Future Grids. The Centre has a number of collaborations with Universities, including: University College London, University of Bristol, Manchester University, and University of Bath. The UK Centre’s main goals are to support EDF Energy and help develop their competitive position within the UK market, through innovation and bringing disruptive technologies to the market.

## Our interest in this competition is:

We want to understand how integrated community energy systems might develop in the UK, along with the technology and business models (incl. assets ownership, management, operations, size and scale, tipping point etc). What are the opportunities and threats from an R&D and Innovation perspective created by local energy systems? We want to understand customers’ motivations and unintended consequences.

## We are offering the following (this might be a project idea or services/skills/resources):

- Modelling and technical expertise in heat networks, CHP optimisation, smart energy supply, microgeneration and storage, electric mobility, energy markets and future grids.
- A track record of successful collaborative R&D projects with a variety of academic, SME and large industry partners. These successes include initial feasibility studies that have subsequently developed into real-world technology exploitation projects.

## We are seeking the following (services or specific types of partner):

- To join a consortium where we can add value in terms of technical expertise and experience.
- The opportunity to extend our network of collaborative R&D partners, especially with SMEs.

## Contact Details

**Name :** Sarah Bee

**Telephone :**  
07875 118 182

**Email :**  
Sarah.Bee@edfenergy.com